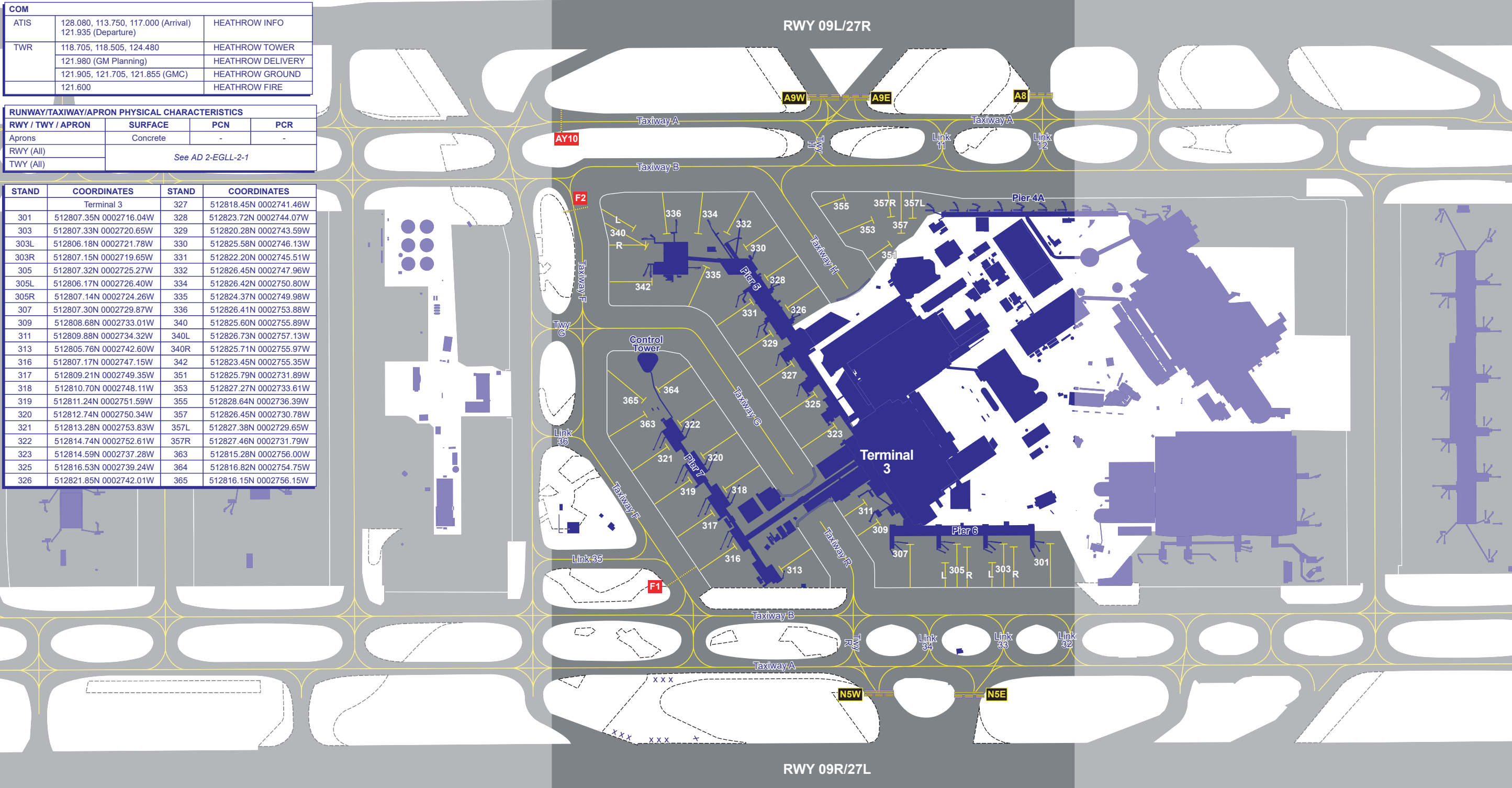


| COM  |  |                   |
|------|--|-------------------|
| ATIS | 128.080, 113.750, 117.000 (Arrival)<br>121.935 (Departure) | HEATHROW INFO     |
| TWR  | 118.705, 118.505, 124.480                                  | HEATHROW TOWER    |
|      | 121.980 (GM Planning)                                      | HEATHROW DELIVERY |
|      | 121.905, 121.705, 121.855 (GMC)                            | HEATHROW GROUND   |
|      | 121.600  | HEATHROW FIRE     |

| RUNWAY/TAXIWAY/APRON PHYSICAL CHARACTERISTICS |                   |     |     |
|---|-------------------|-----|-----|
| RWY / TWY / APRON                             | SURFACE           | PCN | PCR |
| Aprons  | Concrete          | -   | -   |
| RWY (All)                                     | See AD 2-EGLL-2-1 |     |     |
| TWY (All)                                     |                   |     |     |

| STAND | COORDINATES            | STAND | COORDINATES            |
|-------|------------------------|-------|------------------------|
|       | Terminal 3             | 327   | 512818.45N 0002741.46W |
| 301   | 512807.35N 0002716.04W | 328   | 512823.72N 0002744.07W |
| 303   | 512807.33N 0002720.65W | 329   | 512820.28N 0002743.59W |
| 303L  | 512806.18N 0002721.78W | 330   | 512825.58N 0002746.13W |
| 303R  | 512807.15N 0002719.65W | 331   | 512822.20N 0002745.51W |
| 305   | 512807.32N 0002725.27W | 332   | 512826.45N 0002747.96W |
| 305L  | 512806.17N 0002726.40W | 334   | 512826.42N 0002750.80W |
| 305R  | 512807.14N 0002724.26W | 335   | 512824.37N 0002749.98W |
| 307   | 512807.30N 0002729.87W | 336   | 512826.41N 0002753.88W |
| 309   | 512808.68N 0002733.01W | 340   | 512825.60N 0002755.89W |
| 311   | 512809.88N 0002734.32W | 340L  | 512826.73N 0002757.13W |
| 313   | 512805.76N 0002742.60W | 340R  | 512825.71N 0002755.97W |
| 316   | 512807.17N 0002747.15W | 342   | 512823.45N 0002755.35W |
| 317   | 512809.21N 0002749.35W | 351   | 512825.79N 0002731.89W |
| 318   | 512810.70N 0002748.11W | 353   | 512827.27N 0002733.61W |
| 319   | 512811.24N 0002751.59W | 355   | 512828.64N 0002736.39W |
| 320   | 512812.74N 0002750.34W | 357   | 512826.45N 0002730.78W |
| 321   | 512813.28N 0002753.83W | 357L  | 512827.38N 0002729.65W |
| 322   | 512814.74N 0002752.61W | 357R  | 512827.46N 0002731.79W |
| 323   | 512814.59N 0002737.28W | 363   | 512815.28N 0002756.00W |
| 325   | 512816.53N 0002739.24W | 364   | 512816.82N 0002754.75W |
| 326   | 512821.85N 0002742.01W | 365   | 512816.15N 0002756.15W |



500 ft

150 m

VAR 0.4°E - 2022

N

Annual Rate of Change 0.20°E